

GRIPIFY

STANDARD FITNESS TILES

DATASHEET

WWW.GRIPIFY.SI



TABLE OF CONTENTS

I. DIMENSIONS & COLOURS [PAGE 02](#)

II. STANDARD TILE [PAGE 04](#)

III. INSTALLATION METHODS [PAGE 06](#)

IV. NOISE REDUCTION [PAGE 10](#)

V. BENEFITS [PAGE 12](#)

01. BLACK [PAGE 14](#)

02. GREY [PAGE 18](#)

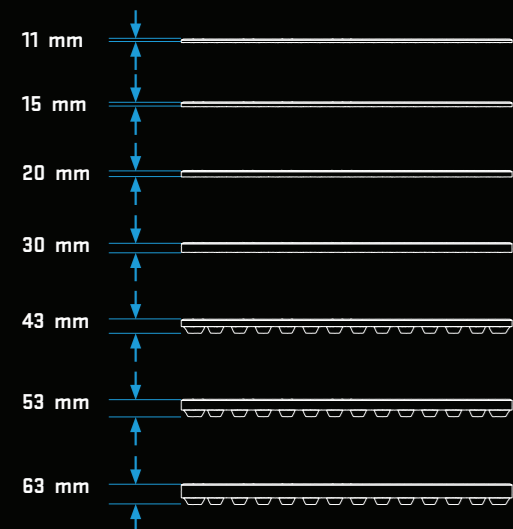
03. PURE HYGIENE [PAGE 22](#)

04. RAMPS [PAGE 26](#)

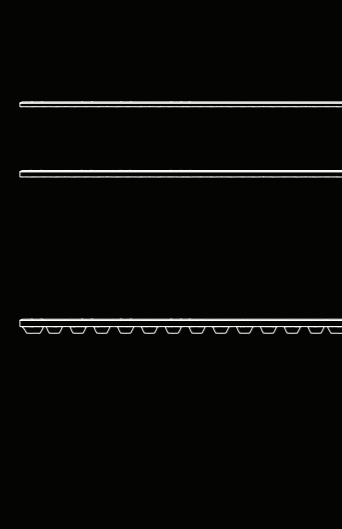
I. DIMENSIONS & COLOURS

THICKNESSES

STANDARD TILES BLACK

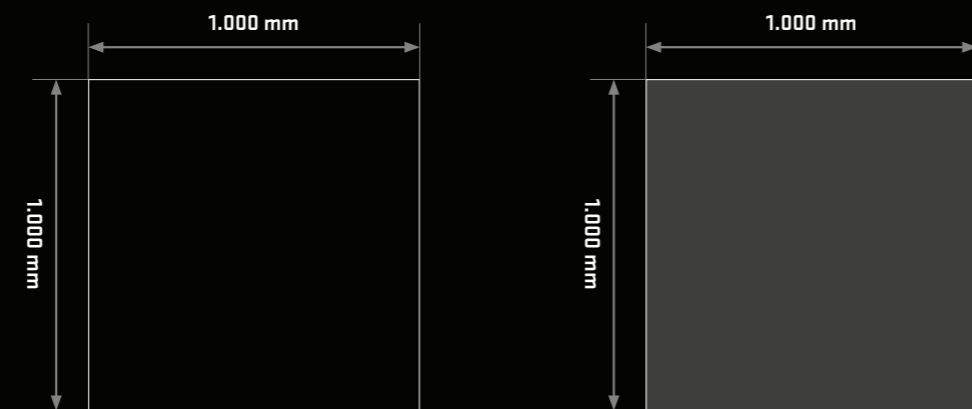


STANDARD TILES GREY

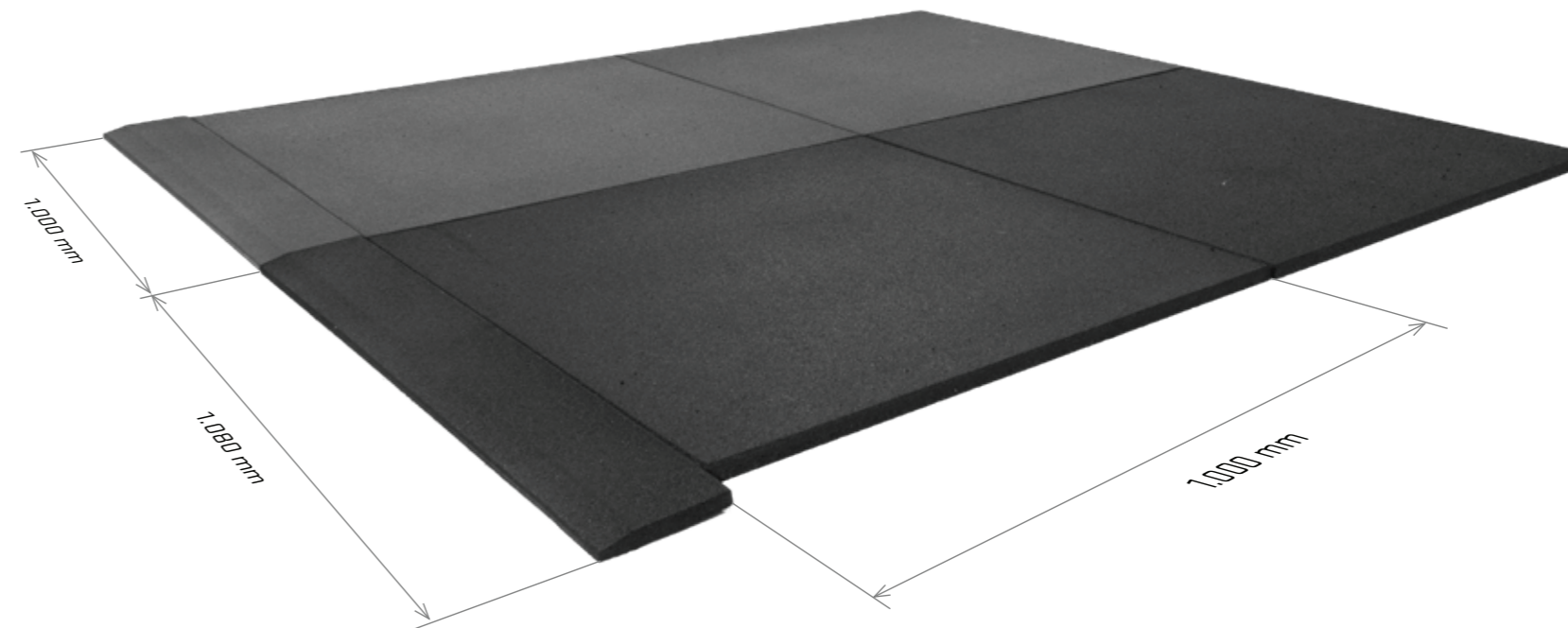


DIMENSIONS

All of the standard tiles are 1 x 1 meter. The matching ramps and corners add 160 mm to the total width and are available in 15, 20, 30, 43 and 60 mm.

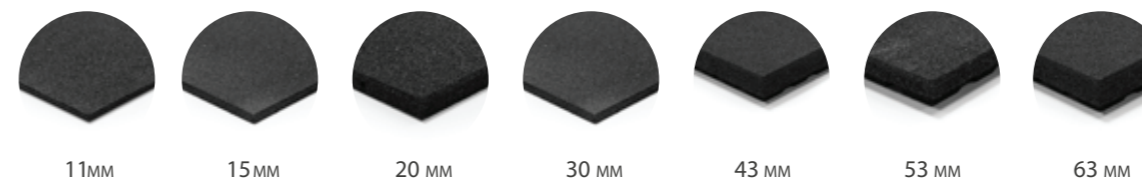


OUR DIMENSIONS

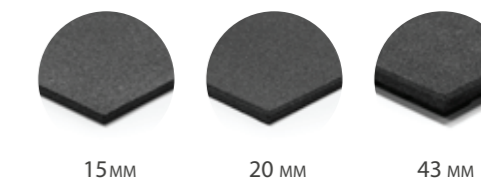


OUR COLOURS

BLACK



GREY

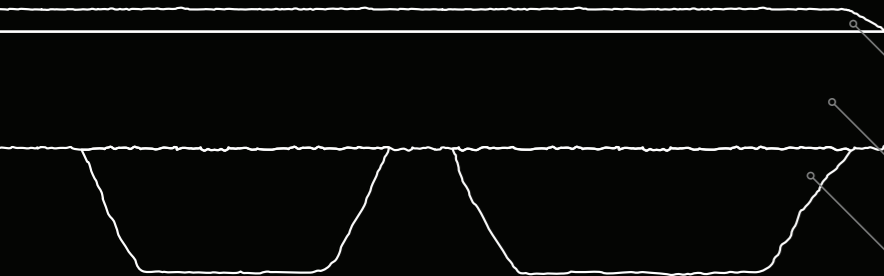


II. STANDARD TILE

THICKNESS 11 mm • 15 mm • 20 mm • 30 mm



THICKNESS 43 mm • 53 mm • 63 mm



The high impact absorbing recycled rubber fitness tiles are made and designed for any freeweight and/or functional area.

The standard rubber tile has a 2-layer system; the bottom consists of coarse granules and the top layer of 5 mm consists of finer granules.

These tiles are manufactured in the EU and consist solely out of recycled European car tires, bonded with PU. Because of only using high quality raw material our standard tiles are pretty much odourless which makes these a great match even for small, fully closed off rooms.

Our new pure hygiene addition to the standard tile range offers extra protection against the spreading of bacteria and viruses.

5 MM FINER GRANULES

COARSE GRANULES

STUDED BOTTOM SURFACE

THE BOTTOMS

FLAT

A fully even surface which give these thicknesses an outstanding durability and user friendliness.

AVAILABLE THICKNESS 11 • 15 • 20 • 30

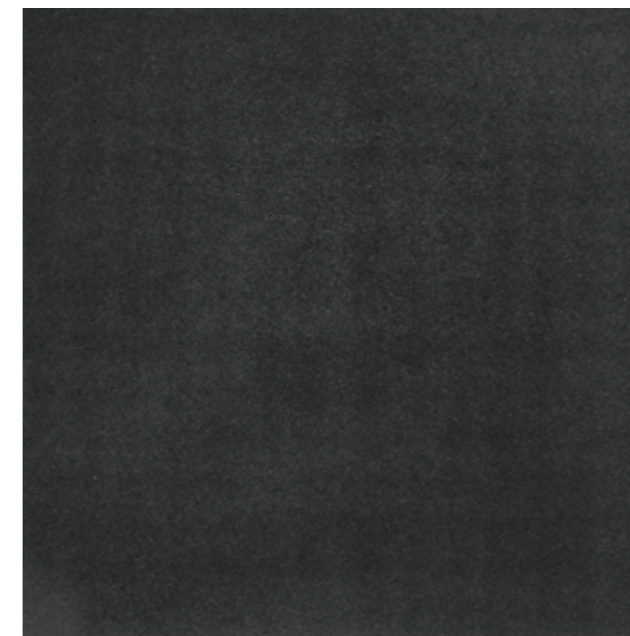


Image: Standard Tile/Flat/Black - 1.000x1.000 mm

ANTI-SHOCK

Our anti-shock bottom is designed to disperse even more sound and impact vibration.

AVAILABLE THICKNESS 43 • 53 • 63

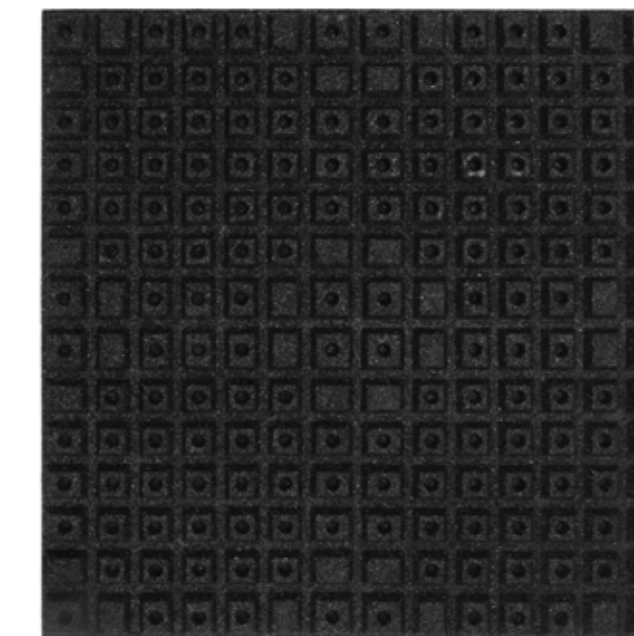
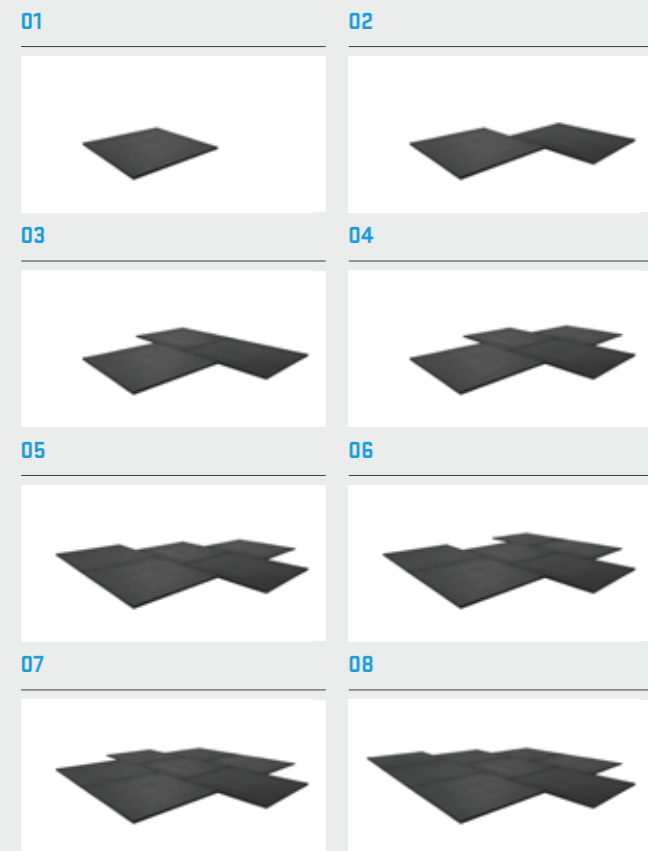


Image: Standard Tile/Anti-Shock/Black - 1.000x1.000 mm

III. INSTALLATION METHODS

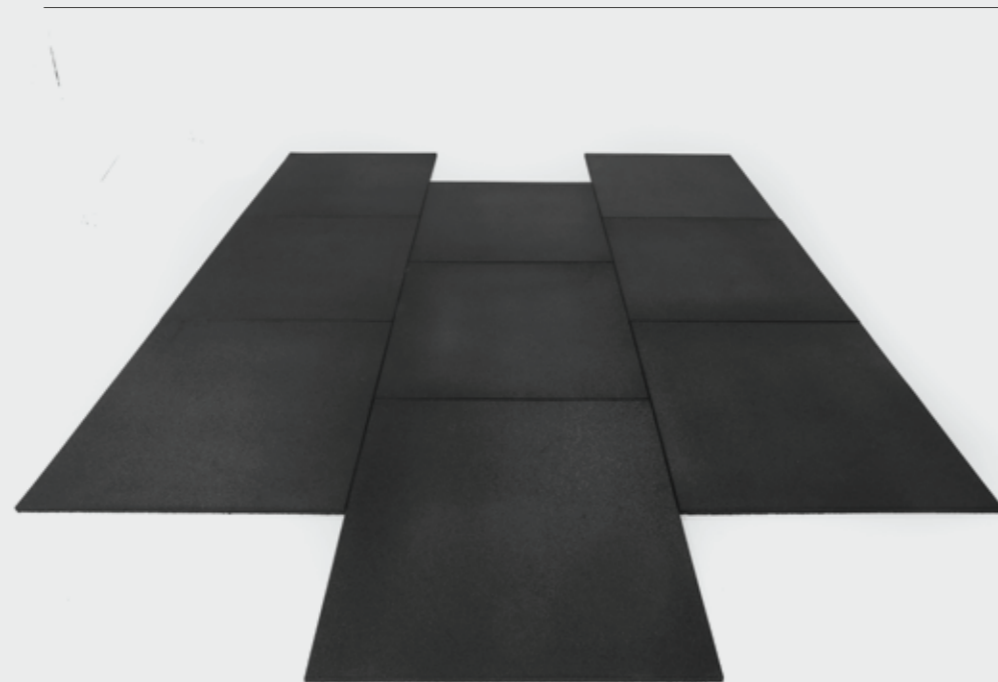
Step by Step

installing the **Standard Tiles Black** with the "Half brick wise" method.



We advise to install the tiles "Half brick wise" and not corner to corner. It is very important that the outer tiles are fixed between a wall or profile so the standard fitness tiles are forced in under tension for the best result.

FINAL RESULT



HALF BRICK WISE

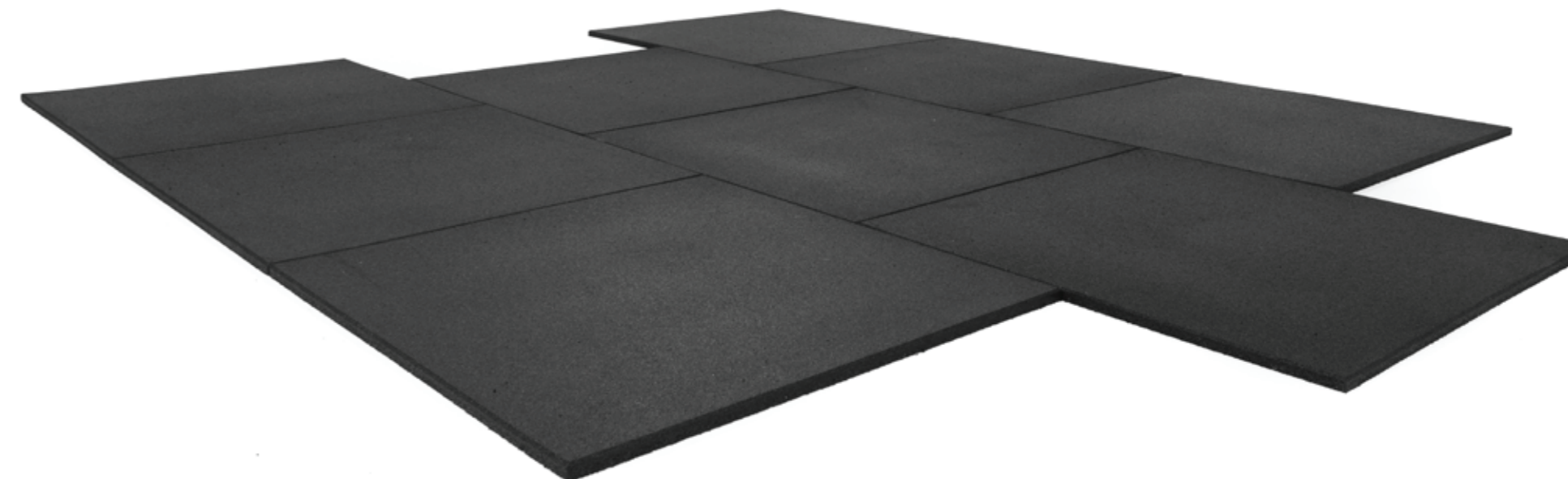
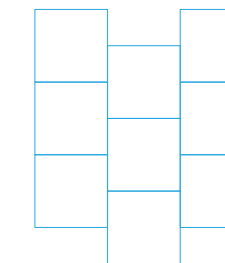
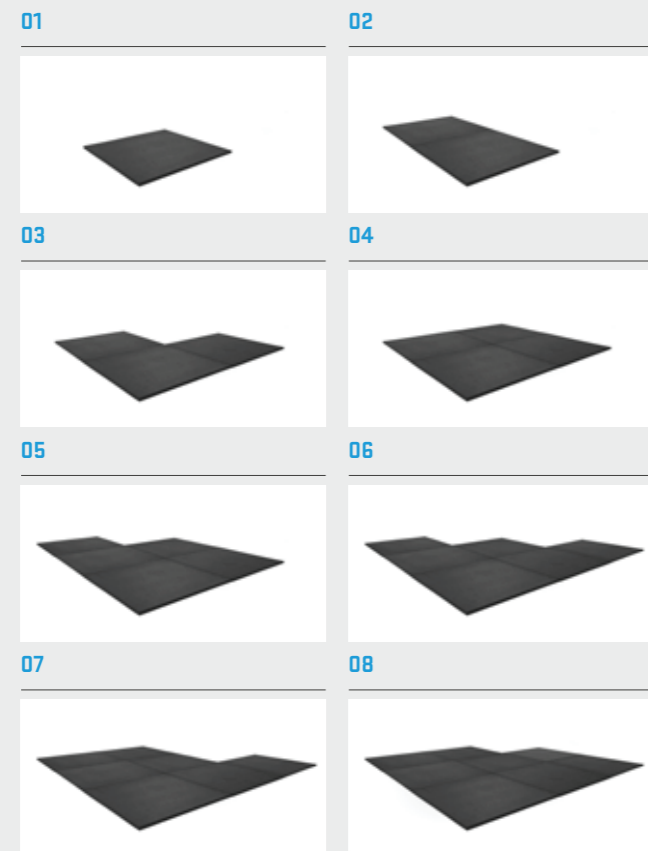


Image: **Standard Tile/Black** - 1.000x1.000x20 mm

III. INSTALLATION METHODS

Step by Step

installing the **Standard Tiles Black** with the "Half brick wise" method.
(not recommended)



We recommend to work with a small overlap of 1 cm per every 5 tiles.
After installing the complete area, the tiles can be squeezed in and
this will make the small gaps dissolve.

FINAL RESULT



CORNER TO CORNER

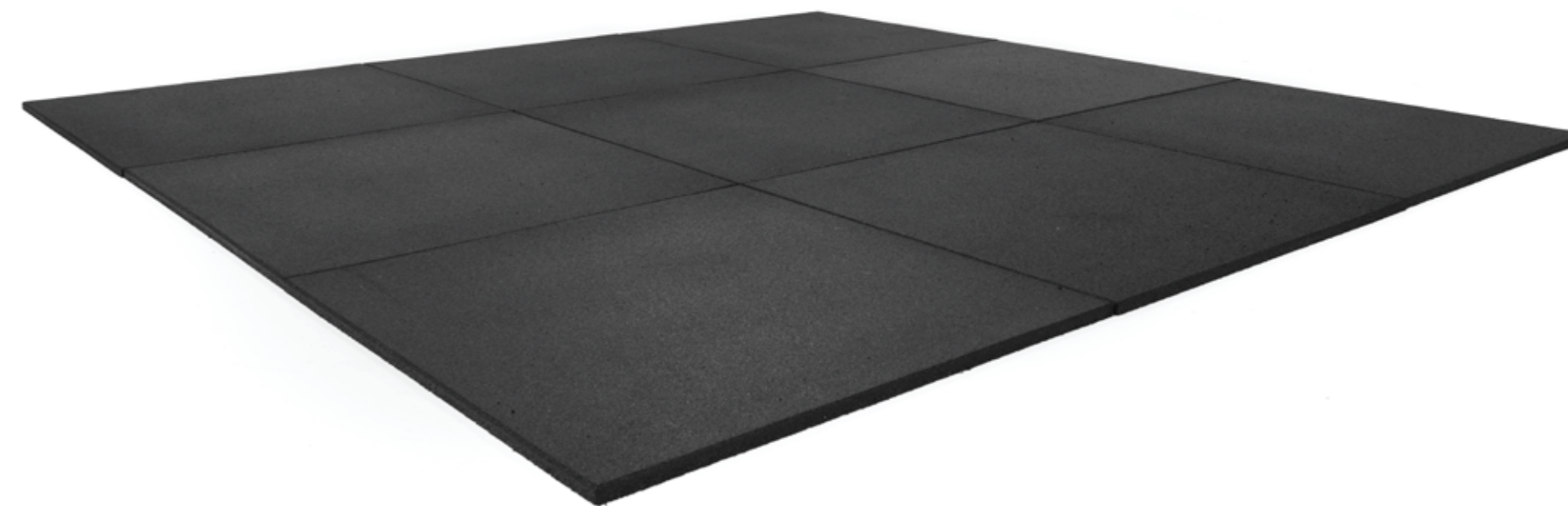
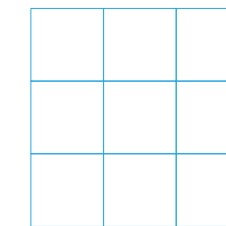
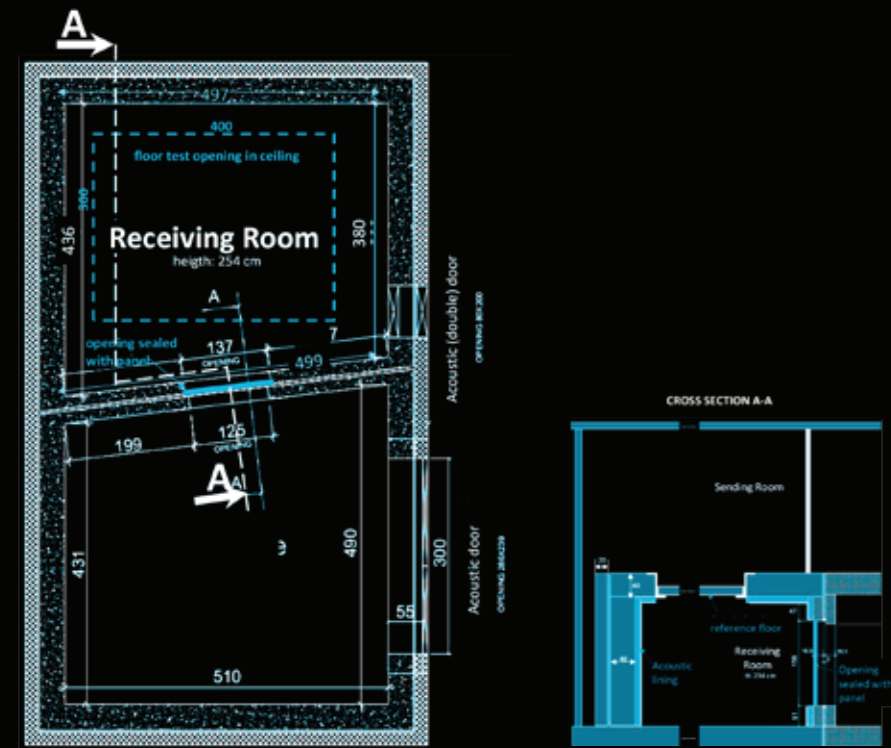


Image: **Standard Tile/Black** - 1.000x1.000x20 mm

IV. NOISE REDUCTION



The test rooms meet the requirements of ISO 10140-5
Both rooms are isolated for vibrations by using a so called room-in-room construction.

One of the most common complaints about fitness facilities, coming from both members as neighbours, is that sound and vibration travels further and more intense than people feel comfortable with. Cautiously made decisions with regards to particularly your performance areas can play a pivotal role in the success of your business.

We have worked hard to create the ideal solution for maximum sound reduction, whilst also making sure not to add unreasonable extra costs to this product.

Our thicker **Standard Fitness Tiles (43, 53, 63)** were purposely engineered with a unique structured bottom which minimizes contact with the subfloor. Together with the tiles' composition and construction it intercepts, absorbs and disperses sound and vibration.

Even though the **thinner tiles (20 mm)** have a flat bottom, the ones we have tested still reach significant sound and impact vibration improvements.

CERTIFIED NOISE REDUCING CAPABILITES

In order to solidify our findings, we have partnered up with an acoustics laboratory accredited according **NBN EN ISO 17025:2005**, to execute a test for measurement of the reduction of impact noise by a floating floor system on a heavyweight standard floor.

Summarizing the report, using our **Standard Fitness Tiles**, leads to the following results:

20 MM THICKNESS

30 MM THICKNESS

43 MM THICKNESS

53 MM THICKNESS

63 MM THICKNESS

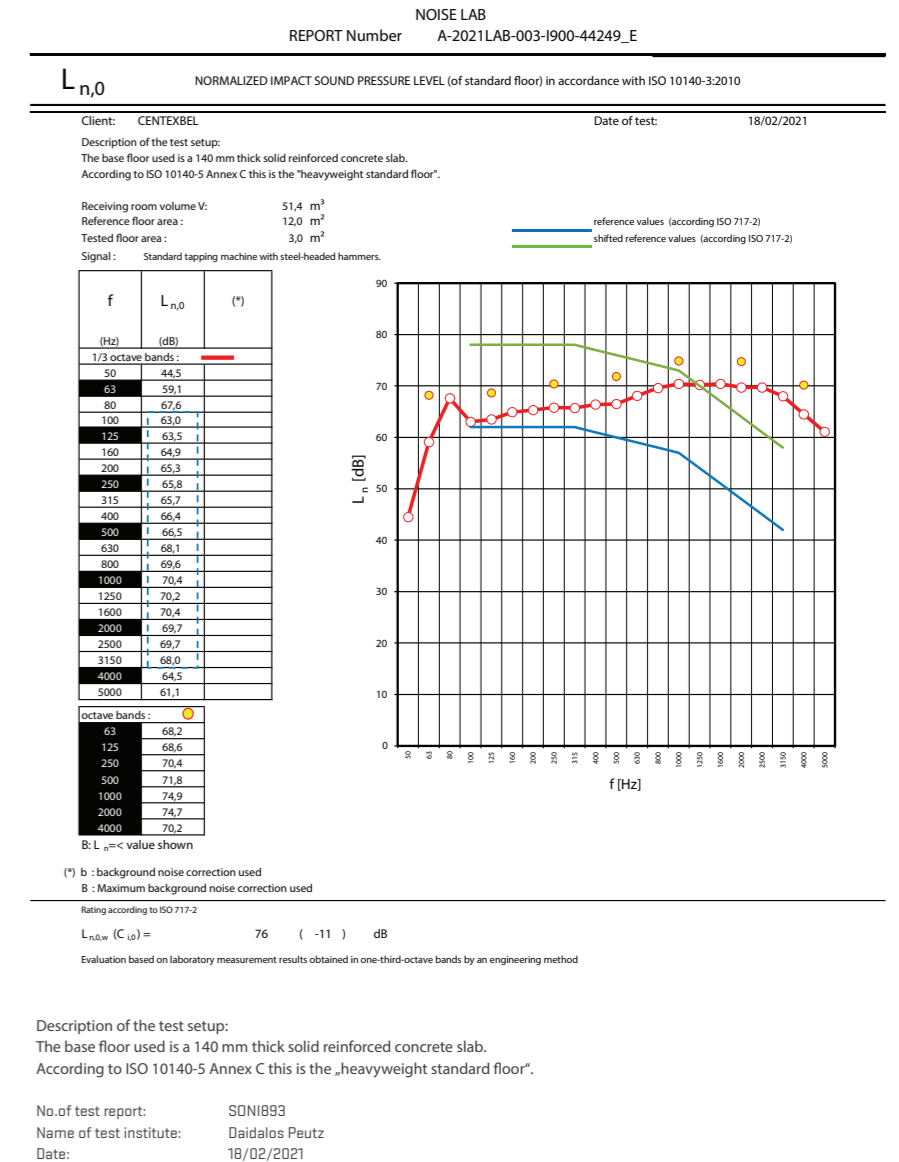
21 DB REDUCTION

ON REQUEST

25 DB REDUCTION

TO FOLLOW

TO FOLLOW



V. BENEFITS



HIGH DENSITY

EUROPEAN MANUFACTURED

100% RECYCLED RUBBER USED

ODOURLESS

01. BLACK

The Standard Fitness Tile Black consists exclusively of recycled SBR granules, bonded with PU.

DIMENSION 1.000 x 1.000 mm

THICKNESSES 11 mm • 15 mm • 20 mm • 30 mm • 43 mm • 53mm • 63 mm

TOLERANCES WIDTH ± 1 % • LENGTH ± 1 % • THICKNESS ± 5 %

SOUND INSULATION

THICKNESS	20 mm	30 mm	43 mm	53 mm	63 mm	
CERTIFIED NOISE REDUCING	REDUCTION	23 dB	<i>not specified</i>	25 dB	<i>not specified</i>	<i>not specified</i>

SPECIFICATIONS - BLACK

BULK DENSITY *Approx. 1.000 kg/m³* OTP 1168, PN-EN ISO 845:2010

SHOCK ABSORPTION 61% EN 14808

VERTICAL DEFORMATION 5 mm EN 14809

HEAD INJURY CRITERIA (HIC) TEST 1,3 m EN 1177

SLIP RESISTANCE *dry conditions* ≤105 PTV *wet conditions* ≤75 PTV PN-EN 13036-4:2004

THERMAL RESISTANCE *Approx. 0,16 m².K/W* *not tested*

ABRASION RESISTANCE, mg ≤560 PN-EN ISO 5470-1:2001

TENSIL STRENGTH, MPA ≤0,65

ELONGATION AT BREAK, & ≤40 PN-EN 12230:2005

HARDNESS 55 up to 75 PN-ISO 868 PN-93 / C-04206

EU FIRE CLASSIFICATION E_{F1} *not tested*

ONE-YEAR WARRANTY* **warranty against manufacturing default - as described in our general Terms and Conditions*

COMPLIANCE WITH CONTENT OF PENTACHLOROPHENOL • ANTISTATIC FLOOR COVERING

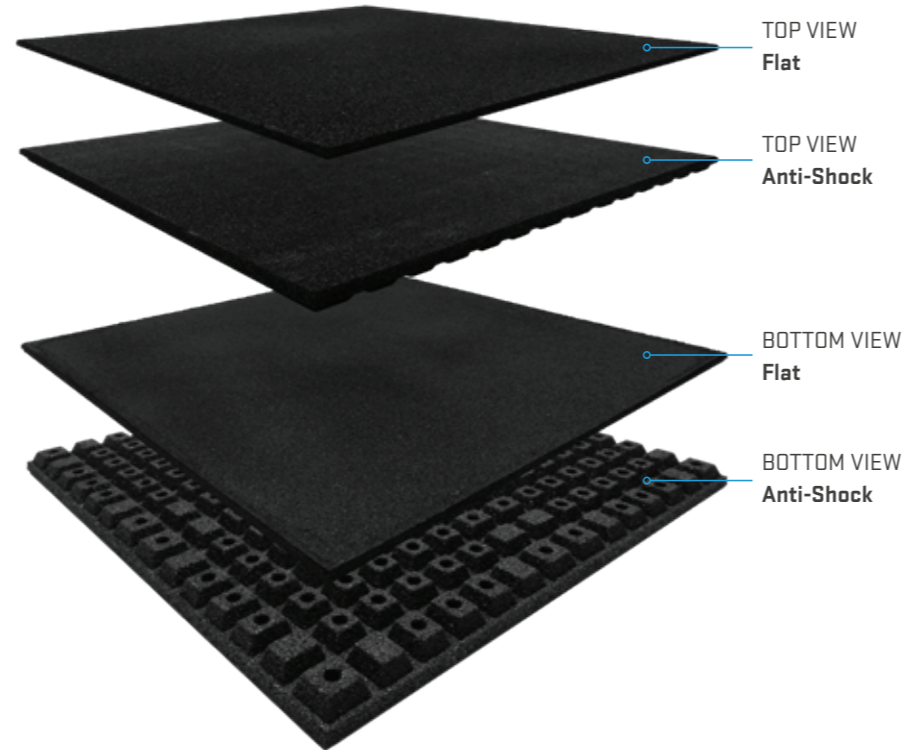


Image: [From top to bottom](#)

Standard Fitness Tile BLACK: 1000 x 1000 mm

THICKNESSES 11 mm • 15 mm • 20 mm • 30 mm

43 mm • 53mm • 63 mm



Image: [TOP VIEW](#)

BLACK

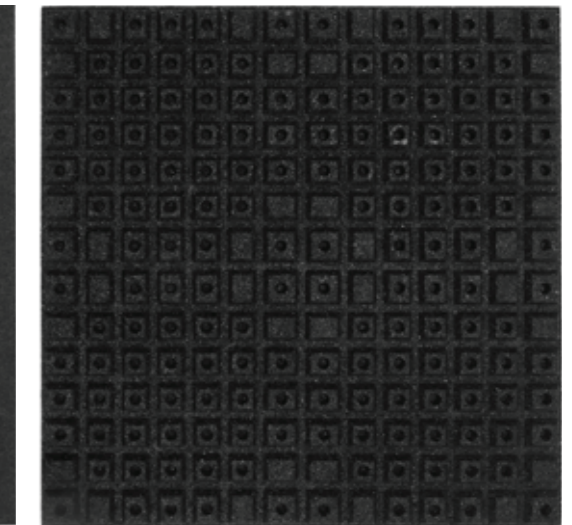
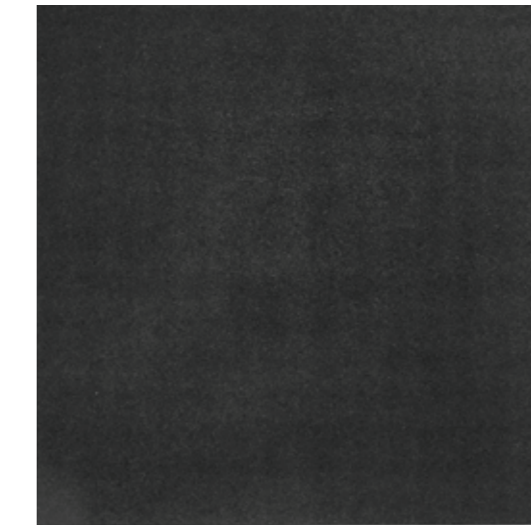
FLAT BOTTOM

BLACK

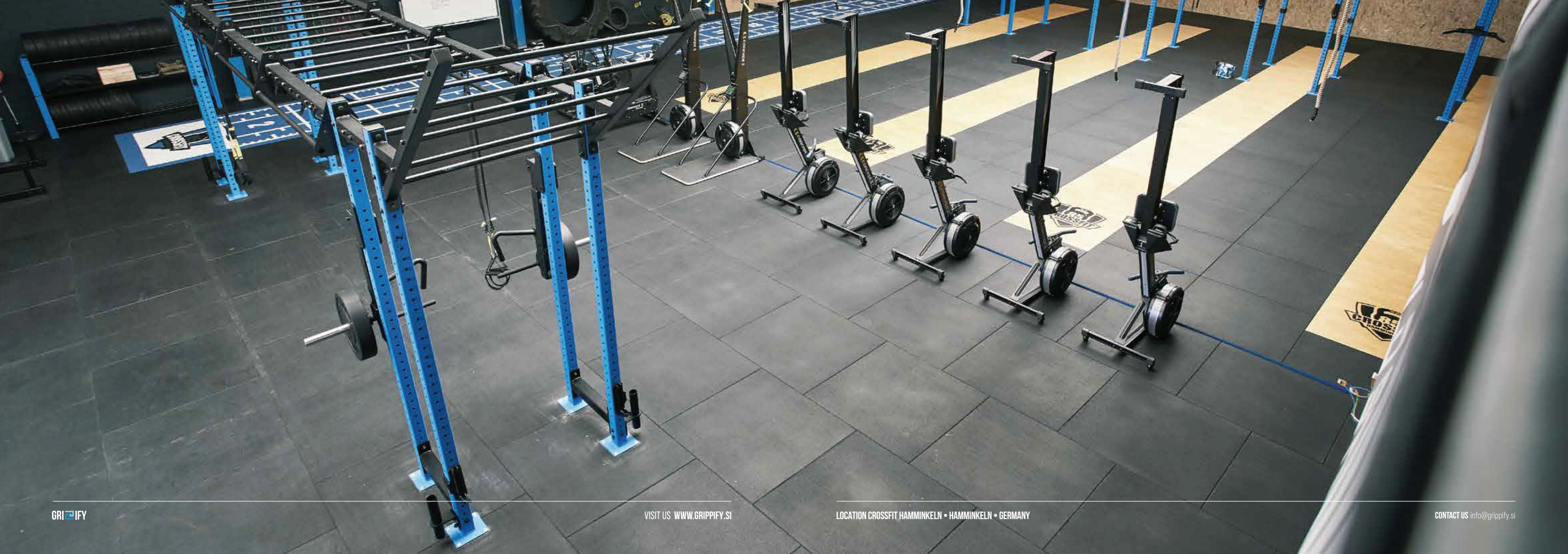
ANTI-SHOCK BOTTOM

THICKNESSES 11 mm • 15 mm • 20 mm • 30 mm

THICKNESSES 43 mm • 53 mm • 63 mm



Images: [BOTTOM VIEWS](#)



02. GREY

The Standard Fitness Tile Grey consists of recycled SBR granules, bonded with coloured PU.

DIMENSION	1.000 x 1.000 mm
THICKNESSES	15 mm • 20 mm • 43 mm
TOLERANCES	WIDTH ± 1 % • LENGTH ± 1 % • THICKNESS ± 5%

SOUND INSULATION	THICKNESS	20 mm	30 mm	43 mm
CERTIFIED NOISE REDUCING	REDUCTION	23 dB	<i>not specified</i>	25 dB

SPECIFICATIONS - GREY

BULK DENSITY	Approx. 1.000 kg/m ³	OTP 1168, PN-EN ISO 845:2010
SHOCK ABSORPTION	61%	EN 14808
VERTICAL DEFORMATION	5 mm	EN 14809
HEAD INJURY CRITERIA (HIC) TEST	1,3 m	EN 1177
SLIP RESISTANCE	dry conditions ≤105 PTV wet conditions ≤75 PTV	PN-EN 13036-4:2004
THERMAL RESISTANCE	Approx. 0,16 m ² .K/W	<i>not tested</i>
ABRASION RESISTANCE, mg	≤560	PN-EN ISO 5470-1:2001
TENSIL STRENGTH, MPA	≤0,65	
ELONGATION AT BREAK, &	≤40	PN-EN 12230:2005
HARDNESS	55 up to 75	PN-ISO 868 PN-93 / C-04206
EU FIRE CLASSIFICATION	E _{F1}	<i>not tested</i>
ONE-YEAR WARRANTY*	<i>*warranty against manufacturing default - as described in our general Terms and Conditions</i>	

COMPLIANCE WITH CONTENT OF PENTACHLOROPHENOL • ANTISTATIC FLOOR COVERING

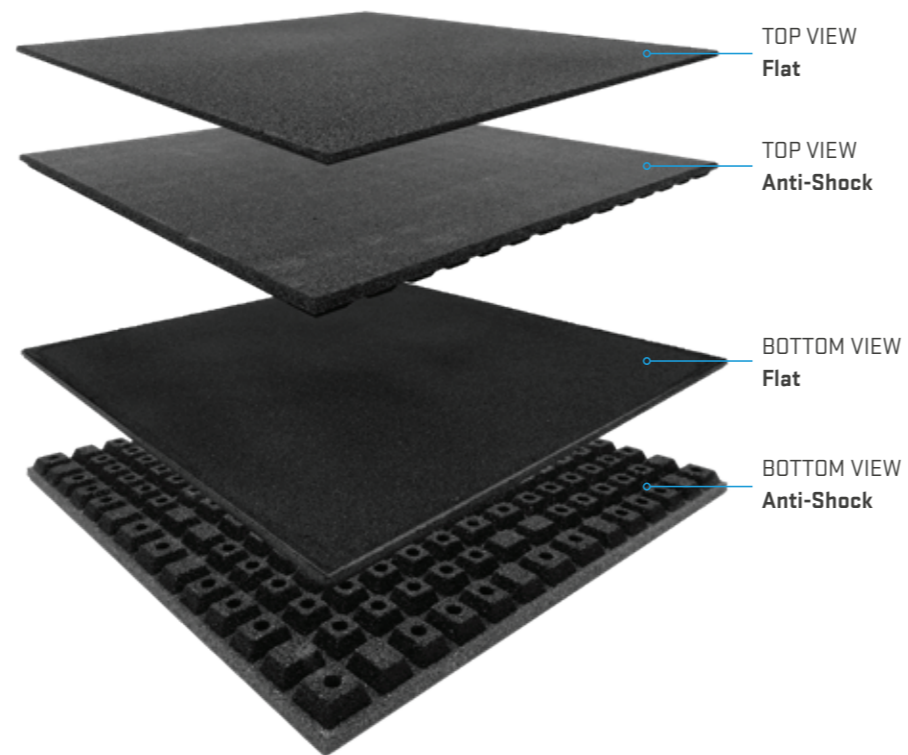
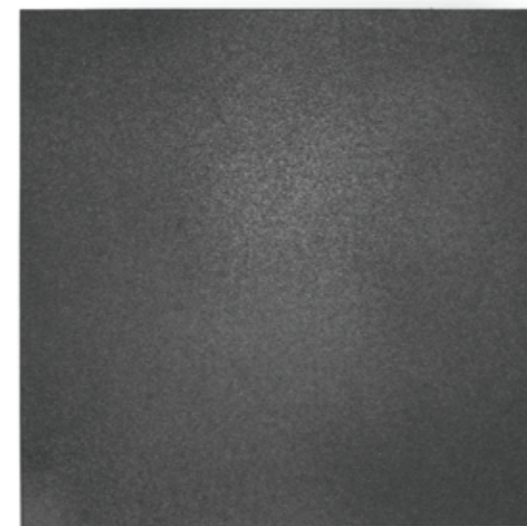
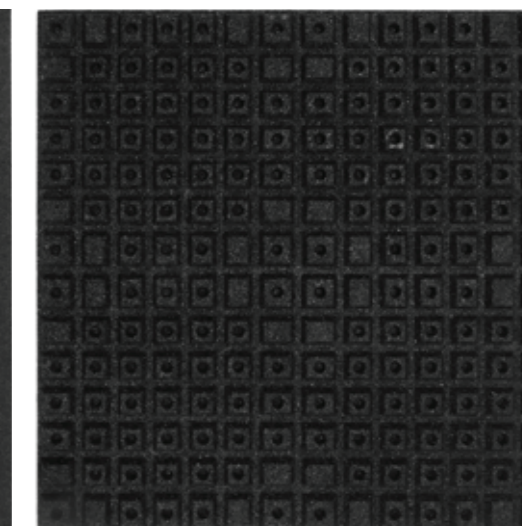


Image: [From top to bottom](#)

Standard Fitness Tile GREY: 1000 x 1000 mm
THICKNESSES 15 mm • 20 mm • 43 mm



GREY	FLAT BOTTOM	GREY	ANTI-SHOCK BOTTOM
THICKNESSES	15 mm • 20 mm	THICKNESSES	43 mm





03. PURE HYGIENE ANTI-GERM / BACTERIA

The Standard Fitness Tile Pure Hygiene consists of recycled SBR granules, bonded with PU.

To this mix we added _____ to _____.

DIMENSION	500 x 500 mm
THICKNESSES	43mm • 53 mm
TOLERANCES	WIDTH ± 1 % • LENGTH ± 1 % • THICKNESS ± 5%

SOUND INSULATION	THICKNESS	43 mm	53 mm
CERTIFIED NOISE REDUCING	REDUCTION	25 dB	<i>not specified</i>

SPECIFICATIONS - PURE HYGIENE

BULK DENSITY	Approx. 1.000 kg/m ³	OTP 1168, PN-EN ISO 845:2010
SHOCK ABSORPTION	61%	EN 14808
VERTICAL DEFORMATION	5 mm	EN 14809
HEAD INJURY CRITERIA (HIC) TEST	1,3 m	EN 1177
SLIP RESISTANCE	dry conditions ≤105 PTV wet conditions ≤75 PTV	PN-EN 13036-4:2004
THERMAL RESISTANCE	Approx. 0,16 m ² .K/W	<i>not tested</i>
ABRASION RESISTANCE, mg	≤560	PN-EN ISO 5470-1:2001
TENSIL STRENGTH, MPA	≤0,65	
ELONGATION AT BREAK, &	≤40	PN-EN 12230:2005
HARDNESS	55 up to 75	PN-ISO 868 PN-93 / C-04206
EU FIRE CLASSIFICATION	E _{F1}	<i>not tested</i>
ONE-YEAR WARRANTY*	<i>*warranty against manufacturing default - as described in our general Terms and Conditions</i>	

COMPLIANCE WITH CONTENT OF PENTACHLOROPHENOL • ANTISTATIC FLOOR COVERING

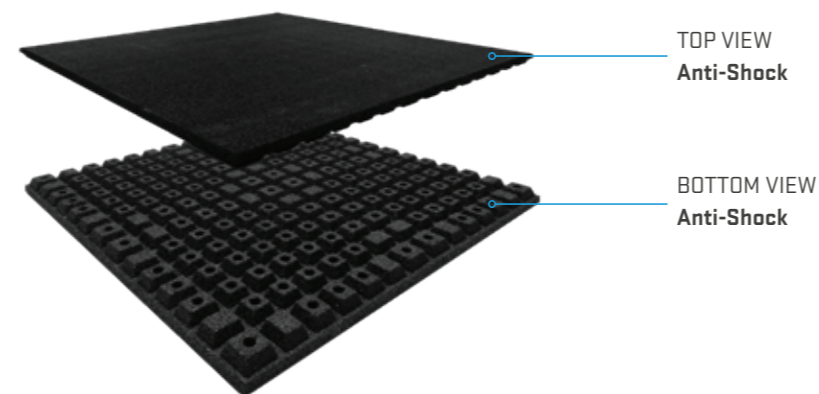


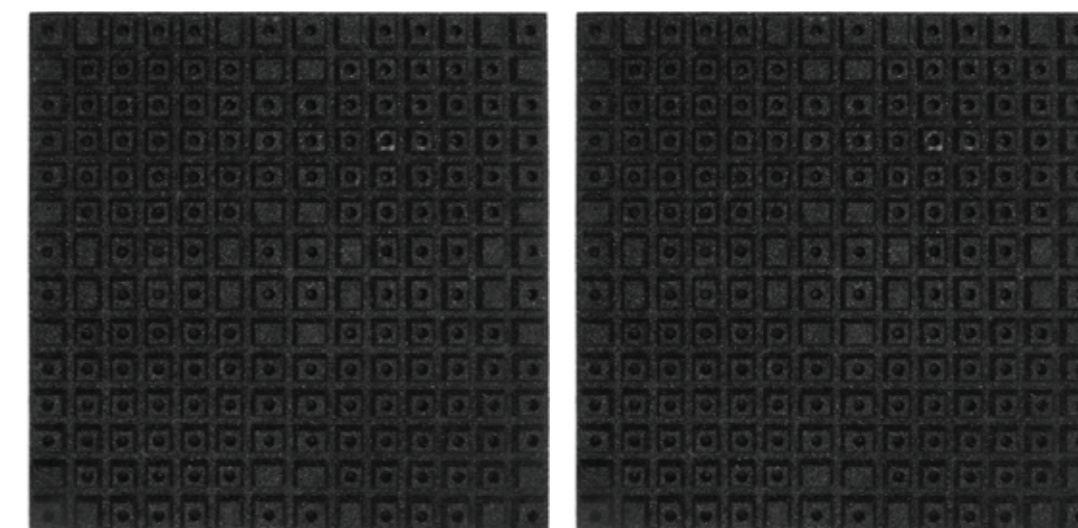
Image: [From top to bottom](#)

PURE HYGIENE: 500 x 500 mm	
THICKNESSES	43 mm • 53mm

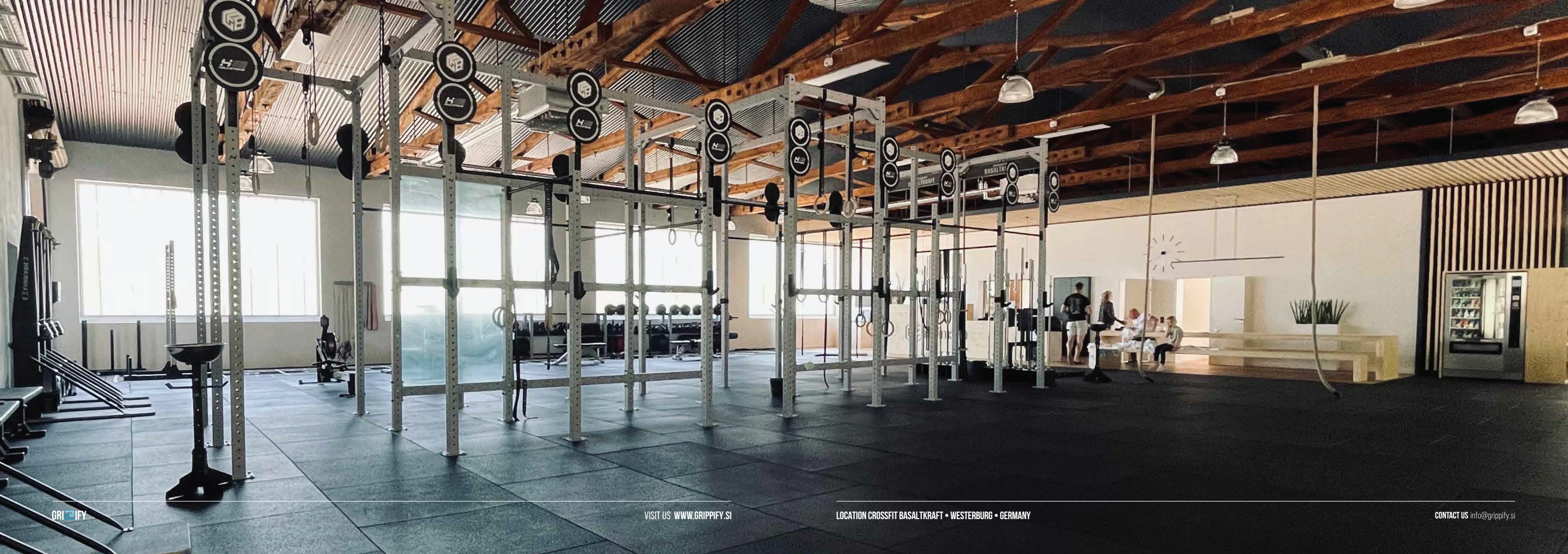


Image: [TOP VIEW](#)

PURE HYGIENE	ANTI-SHOCK BOTTOM
THICKNESSES	43 mm • 53 mm



Images: [BOTTOM VIEWS](#)



04. RAMP

The Standard Fitness Tile Ramps are available in 15, 20, 30, 43, 53, 63 mm.

DIMENSIONS	160 x 1.080 mm	160 x 1.000 mm
THICKNESSES	15 mm • 20 mm • 30 mm	43 mm • 53 mm
TOLERANCES	WIDTH ± 1 % • LENGTH ± 1 % • THICKNESS ± 5%	

SOUND INSULATION	THICKNESS	20 mm	30 mm	43 mm	53 mm	63 mm
CERTIFIED NOISE REDUCING	REDUCTION	23 dB	<i>not specified</i>	25 dB	<i>not specified</i>	<i>not specified</i>

SPECIFICATIONS - RAMP

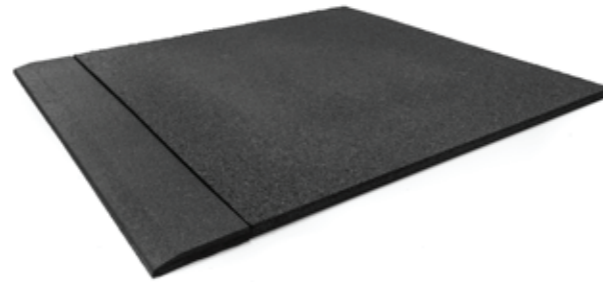
BULK DENSITY	Approx. 1.000 kg/m ³	OTP 1168, PN-EN ISO 845:2010
SHOCK ABSORPTION	61%	EN 14808
VERTICAL DEFORMATION	5 mm	EN 14809
HEAD INJURY CRITERIA (HIC) TEST	1,3 m	EN 1177
SLIP RESISTANCE	dry conditions ≤105 PTV wet conditions ≤75 PTV	PN-EN 13036-4:2004
THERMAL RESISTANCE	Approx. 0,16 m ² .K/W	<i>not tested</i>
ABRASION RESISTANCE, mg	≤560	PN-EN ISO 5470-1:2001
TENSIL STRENGTH, MPA	≤0,65	
ELONGATION AT BREAK, &	≤40	PN-EN 12230:2005
HARDNESS	55 up to 75	PN-ISO 868 PN-93 / C-04206
EU FIRE CLASSIFICATION	E _{F1}	<i>not tested</i>
ONE-YEAR WARRANTY*	<i>*warranty against manufacturing default - as described in our general Terms and Conditions</i>	

COMPLIANCE WITH CONTENT OF PENTACHLOROPHENOL • ANTISTATIC FLOOR COVERING

STANDARD FITNESS RAMP	160 x 1.080 mm
TOP VIEW	RAMP 20 mm + Standard Fitness Tile 20 mm / BLACK



STANDARD FITNESS RAMP	160 x 1.000 mm
TOP VIEW	RAMP 43 mm + Standard Fitness Tile 43 mm / BLACK



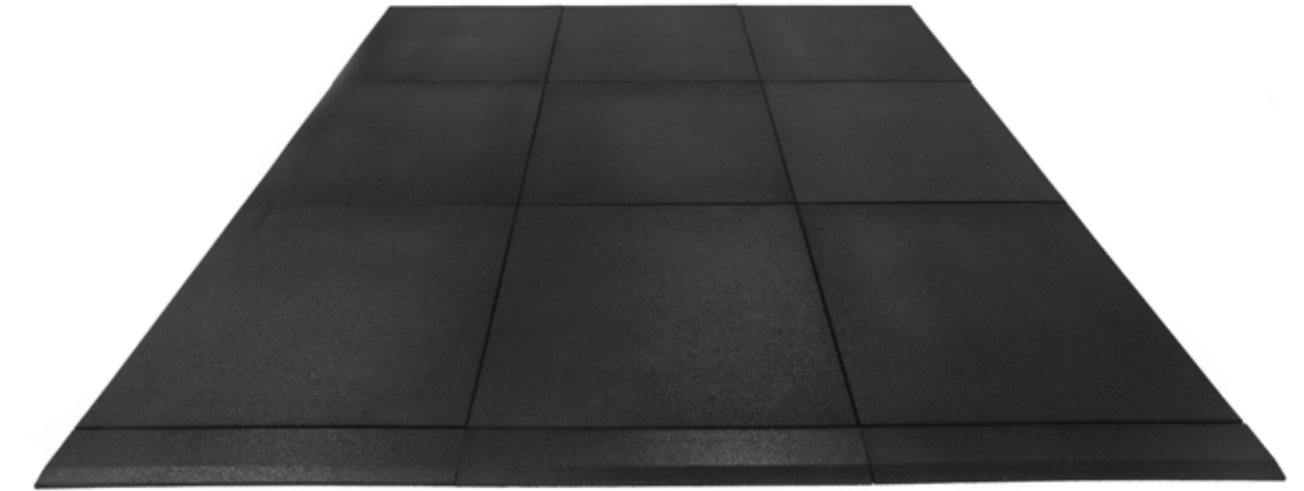
RAMP: 160 x 1.080 mm


RAMP: 160 x 1.000 mm


Image: [TOP VIEW](#)

Image: [FRONT VIEW](#)

3x RAMP 43 mm / BLACK + 9x Standard Fitness Tile 43 mm / BLACK



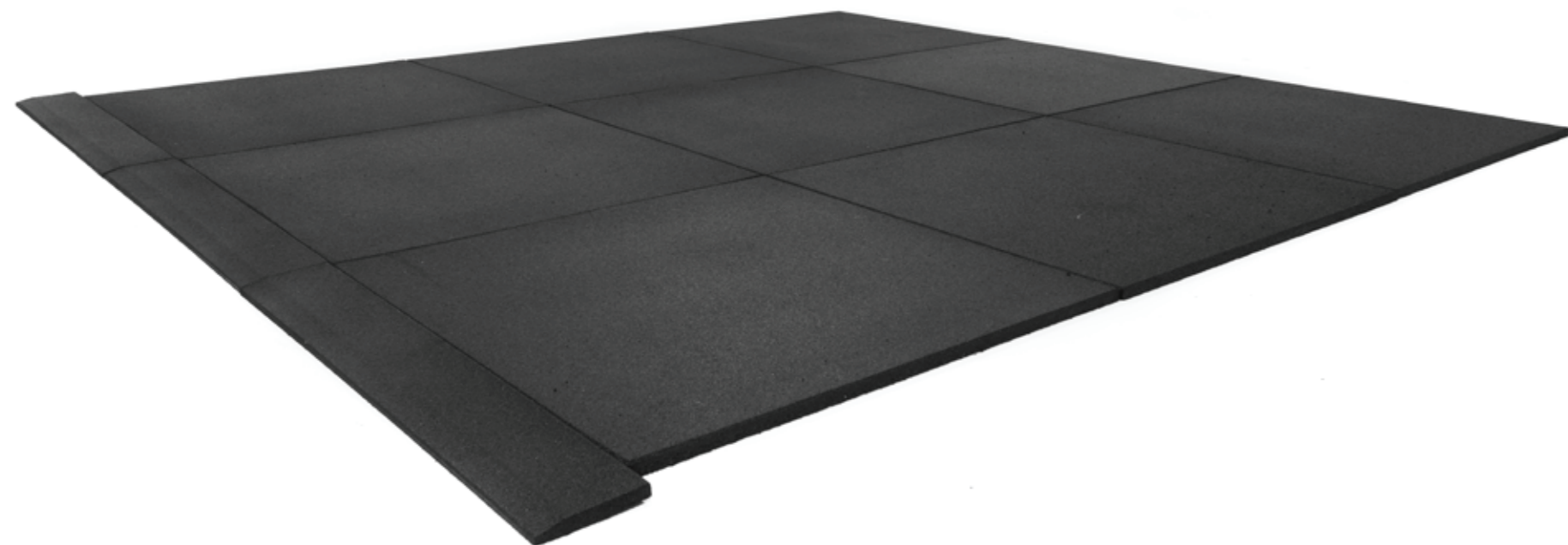


Image: **ANGLED VIEW** 3x RAMP - 43x160x1.080 mm - BLACK + 9x Standard Fitness Tile - 43x1.000x1.000 mm - BLACK

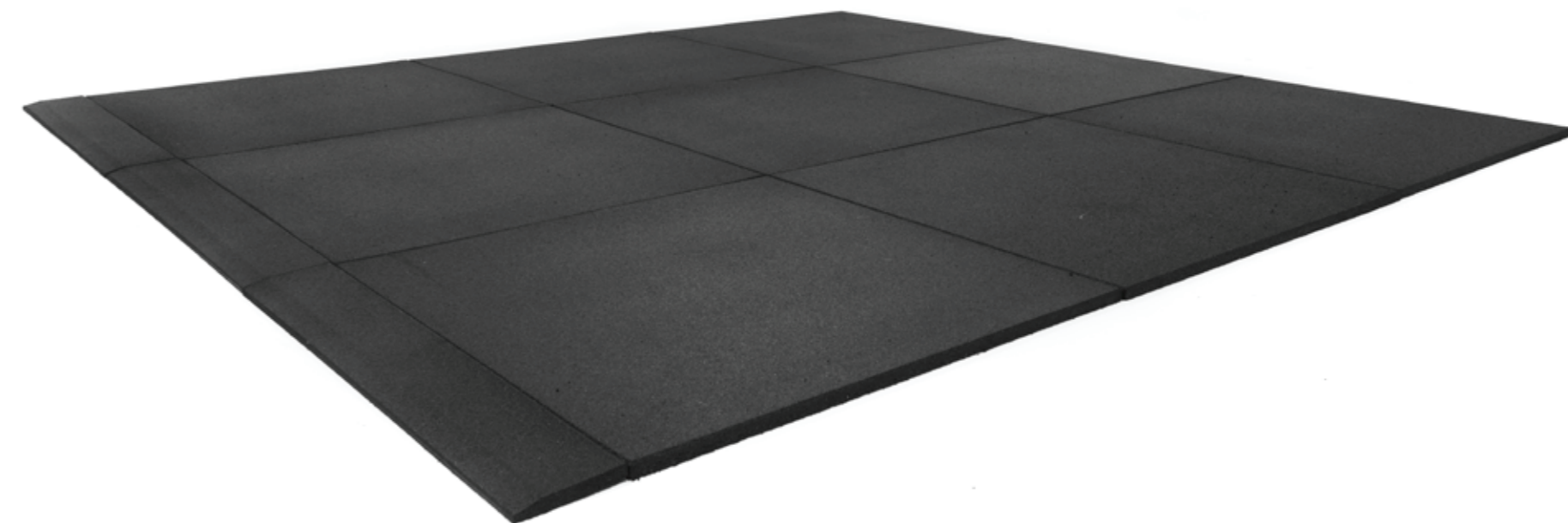


Image: **ANGLED VIEW** 3x RAMP - 20x160x1.000 mm - BLACK + 9x Standard Fitness Tile - 20x1.000x1.000 mm - BLACK



GRIPIFY

THANK YOU